

TOGETHER

INDEPENDENT

POWERFUL



M. ROTH GmbH & Co. KG
STAINLESS STEEL
VESSELS AND
APPARATUS

© www.DYNADESIGN.de - Phone 0049725-709915



M. ROTH GmbH & Co. KG
Stainless Steel Vessels
and Apparatus
Gewerbestraße 3
D-97355 Wiesenbronn
www.roth-behaelter.de



Engineering & Consulting
**Ruland Engineering &
Consulting GmbH**
Im Altenschemel 55
D-67435 Neustadt
www.rulandec.de



Viktor Gresser GmbH
Process Plant Engineering
Ditthornstraße 12 b
93055 Regensburg
www.viktor-gresser.de



ATN
Aqua Technology Nörpel
Im Neuenbühl 14
D-71287 Weissach
www.atn-aqua-consult.de



Barth GmbH
Tanks and Apparatus
Kaiserstraße 23
D-76646 Bruchsal
www.barth-tank.de



M. ROTH GmbH & Co. KG
STAINLESS STEEL
VESSELS AND
APPARATUS

M. ROTH GmbH & Co. KG
Gewerbestraße 3
D-97355 Wiesenbronn

phone 0049-9325-97941-0
fax 0049-9325-97941-29

www.roth-behaelter.de
info@roth-behaelter.de



Pressure Equipment Directive 97/23 EG



Certificate of Conformance
(for burnable and water
endangered fluids)



Pressure Equipment according
to ASME with U-stamp



Registration with National Board



Specialized Company § 19 I WHG

EXPERIENCE & INNOVATION

1982 Commencement of fabricating vessels and apparatus of rust- and acid resistant stainless steels.

1989 Moving into our new company buildings.

1993 Extension of the company by a production tower.

1998 Extension of our office area.

2000 Extension of our production area to 1.700 m² and relocation of our storage area to a second building.

2005 Moving into our new staff building.

2008 Initial startup of our decoiler plant and cut-to-size facility.

In the meantime our total plot area is 16.000 m². Qualified employees guarantee a very high quality standard.

Computer aided 3D-design is continued by production on high-tec facilities as well as a high scope of manufactural skills.

The aim of our efforts is to apply and optimise all positive experiences and knowledges we have gained in different fields on current projects in order to achieve the entire satisfaction of our customers.





HOLISTIC THINKING

FOR CUSTOMIZED
SOLUTIONS

Yoghurt vessel

- 4 vessels of 67.000 l each arranged atop of each other
- footwell and head-space accessible from the building
- lower tanks furnished with a jacket-heating / cooling 3 bar
- seal-welded insulation
- product side Ra < 0.8 µm
- material 1.4541
- pressure design: -1/3.7 bar, 135 °C
- 1.36 kg/dm³



Cubical tank facility

- material 1.4301 lld
- tank sizes of 500
- 30.000 l each



Fumes filter

- fumes filter with an inserted floor
- 3 spraying levels and an electrostatic honeycomb filter (45 tons) as final clearing stage
- top end and flue flanged
- diameter 9 m
- height of filter 23 m
- height of flue mouth 43 m
- material 1.4571
- pressure design: -100/200 m bar, 90 °C



Pharmacy vessel

- 600 l
- tempering shell -1/5 bar
- insulating shell
- welded-on control cabinet
- material 1.4435, Fe < 1 %
- Ra < 0.2 µm, e-polished
- pressure design: -1/3 bar, 144 °C



Fermenting vessel

- 150 hl / CIP-able
- lld-surface



Tank facility

- for concentrates 40.000 l and 170.000 l
- sterile tanks 43.000 l
- -1/3.5 bar
- seal-welded insulation shell



Storage and blending tanks for concentrates

- 100 m³ before shipment on board

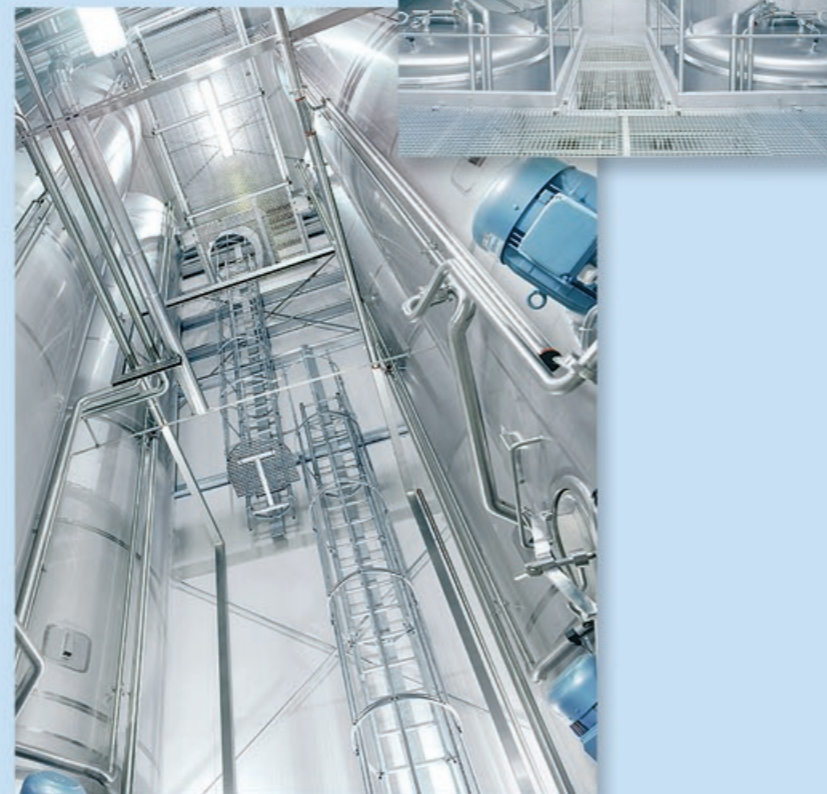
On-site manufactured tank facility for concentrates

- content 1.1 million l each



Tanks for pasteurizing

- 25.000 l
- materiall 1.4301
- polished



Aeration- and vent bonnet with flyscreen and extractor hood

Cylindroconical tank facility

- with extended support skirt and central controlling area
- 270 hl + 540 hl
- seal-welded insulation shell



Cylindroconical tank facility

- 190 hl
- seal-welded insulation shell



Fermentation tun

- 150 hl
- CIP-able
- 111d-surface

Yeast propagator

- 60 hl
- integrated ventilation in the magnetic agitator



INDUSTRY SOLUTIONS

Pressure vessels for beer and cylindroconical tanks

- content 300 and 500 hl
- 3 bar
- seal-welded insulation shell
- 3-zone cooling shell



Cylindroconical tank facility

- 766 hl
- seal-welded insulation shell



Storage tanks

- 60 hl
- 120 hl



Brew vessels

- 250 hl
- lauter tun under construction
- diameter 5.500 mm

Cubical hot water tank

- 600 hl
- material 1.4404
- 4 % incline of bottom end
- CIP-able
- aluminium-trapezoid sheet insulation





Rectification column

- with lowerable and pivotable bottom end
- material 1.4404
- surface Ra < 0,6 µm
- e-polished
- pressure -1/4 bar, 144°C



Bottom end furnished with supports for the inserted separating screen

Dissolving system for pharmaceuticals

- two-floor installation
- coaxial agitators
- sizes of vessels 5.000 l
- -1/1 bar, tempering shell -1/4 bar
- seal-welded insulation
- material 1.4404
- Ra < 0.8 µm



Tempering vessel

- three-walled with cooling coil
- material 1.4435
- Fe < 1 %
- surface Ra < 0.6 µm
- e-polished
- pressure -1/5 bar
- jacket -1/4 bar



Pharmacy vessel with excentrical toriconical end

- 4.800 l
- material 1.4435
- Fe < 1 %
- surface Ra < 0,6 µm
- tempering shell



Process tank

- facility for pharmaceuticals consisting of 26 tanks with contents from 100 to 3.000 l
- material 1.4435, 1.4547
 - surface Ra < 0,6 µm
 - e-polished
 - pressure -1/3 bar, 135 °C



INDUSTRY SOLUTIONS

Vacuum-deaeration system

- size of vessel 4.000 l
- material 1.4404





Compact CIP plant

- 3-chamber compact CIP plant
- 20.000 l
- leakage-safe fragmentation
- seal-welded insulation
- material 1.4571



Rotating blender for dry substances

- 15.000 kg
- material 1.4404
- Ra < 0,8 µm
- CIP-able ± 0,5 bar
- cable feedthrough

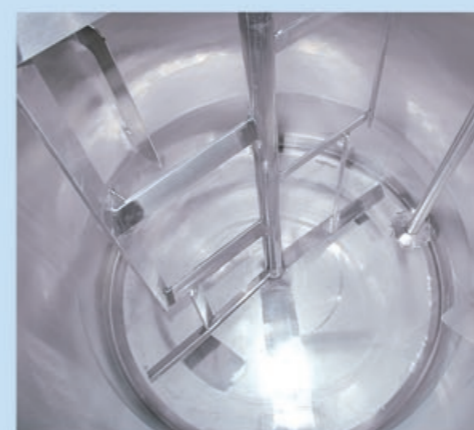
INDUSTRY SOLUTIONS



Butter-melting facility



- butter-melting facility with water bath heating-system
- seal-welded insulation all around
- CIP-bonnet
- feeding-table
- melting grid
- heating unit
- melting output at 85 °C approx. 4.000 kg/h



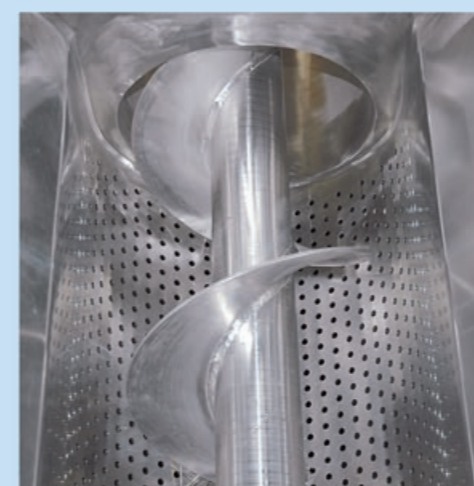
Grid agitator

- and dissolver

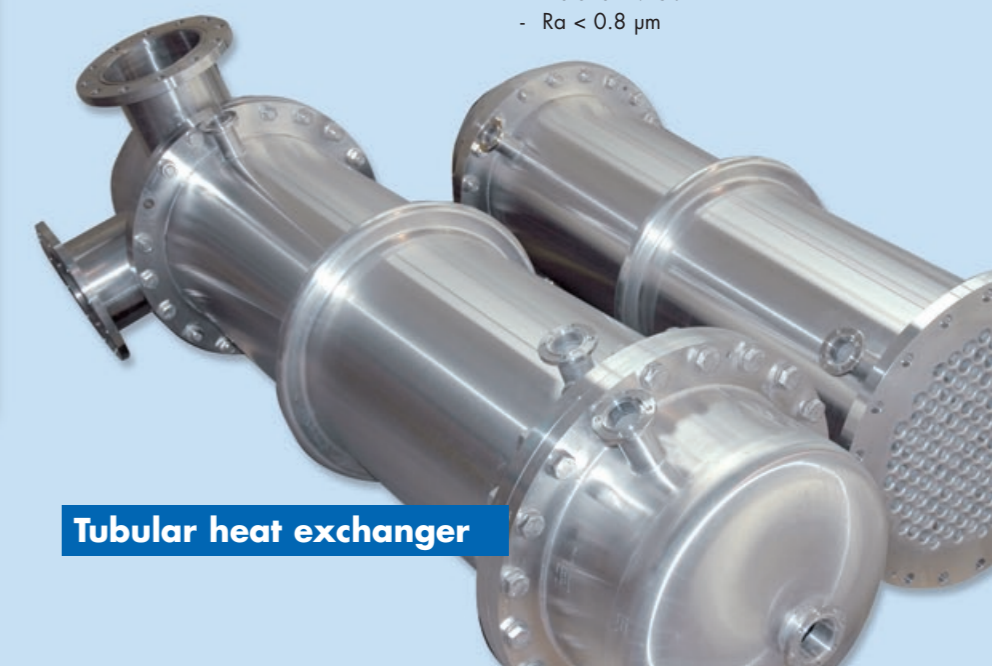


Batch tank

- 16.000 l
- tempering shell -1/6 bar
- seal-welded insulation
- material 1.4562
- Ra < 0.8 µm



Removal conveyor



Tubular heat exchanger

PERFORMANCE

SPECTRUM

QUALITY &

COMPETENCE



Storage tanks

Pressure vessels

Vacuum vessels

Process tanks

Agitator vessels

Sterile tanks

Fermenters

WHG-tanks
(complying with the
German Law for Water
Management)

CIP-vessels

**Special
constructions**

single wall / vertical / horizontal

cylindric / cubic

with tempering shell

- double shell
- form sheet metal
- half tube coil
- laser-welded therm plates

with insulating shell

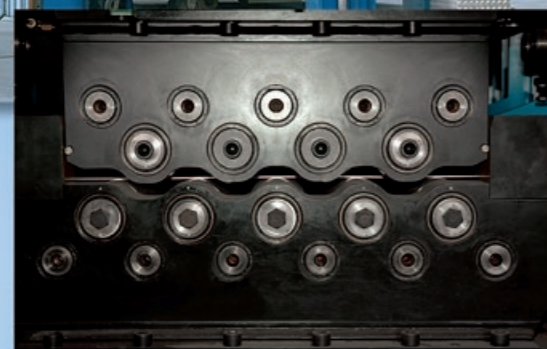
- seal-welded
- trapezoid or smooth sheet metal
- perlites, PU foam, mineral wool

with corresponding material

- EN 10088
- DIN 17440, 17441
- SEW 400
- high performance corrosion steels
- nickel-based materials

with optimal surface finish

- pickling
- passivating
- optical surface finish
- brushing
- shot peening
- marbling
- polishing
- porosity free build up finish up to Ra 0,1µm
- mechanical polishing
- e-polishing



Decoiler plant

- up to sizes of 2.000 mm x 6 mm

5 kW Laser cutting plant

- 5-axles

